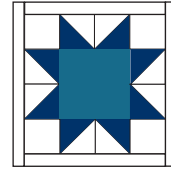


"I spy" Stars and Cars quilt pattern

by Yoan Zivkovic
www.yoansewingstudio.com



Finished Quilt Measurements : 47 1/2" x 61 1/2"

Seam allowances are 1/4" unless otherwise noted
Please read the instructions carefully, and refer to the video tutorial for detailed instructions.

Fabric Requirements

(based on standard 44" wide quilt weight fabric)

Fabric A : 7/8 yard (including border fabric)

Fabric B : 1/2 yard

Fabric C : 1/3 yard

Fabric D (background fabric) : 1 1/2 yard

3 yards backing fabric (or 2 yards if using 60" wide minky backing)

52" x 63" batting

1/2 yard binding fabric

Cutting

Cut Fabric A into

(3x) - 6 1/2" squares

(11x) - 4 1/2" squares

(2x) - 10 1/2" x 4 1/2" rectangle

(2x) - 42 1/2" x 3" (shorter border strips)

(2x) - 61 1/2" x 3" (longer border strips)

Cut Fabric B into

(2x) - 6 1/2" squares

(16x) - 4 1/2" squares

(2x) - 10 1/2" x 4 1/2" rectangle

Cut Fabric C into

(1x) - 6 1/2" square

(9x) - 4 1/2" squares

(1) - 10 1/2" x 4 1/2" rectangle

Cut Fabric D into

(24x) - 4 1/2" squares

(24x) - 3 1/2" squares

(12x) - 12 1/2" x 1 1/2" strips

(12x) - 14 1/2" x 1 1/2" strips

(18x) - 10 1/2" x 2 1/2" strips

(6x) - 4 1/2" x 2 1/2" strips

(12x) - 14 1/2" x 2 1/2" strips

A



B



C



D



Choose dark color for fabric A, Medium color for fabric B,
Light color for fabric C, and white or very light color for fabric D

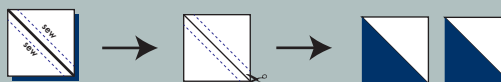
watch the video tutorial : <https://youtu.be/pMgBdWwPIWo>

Step 1. Making the Half Square Triangles (HST)

Take two 4 1/2" squares each from fabric A/B/C with fabric D, lay them out right sides together



Draw a diagonal line, sew 1/4" away from the diagonal line, cut on the diagonal line



Trim each hst to measure 3 1/2" squares



Make 16x

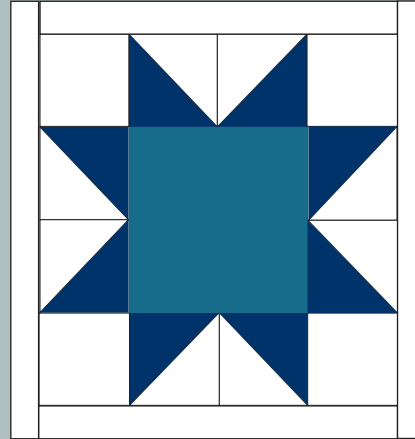
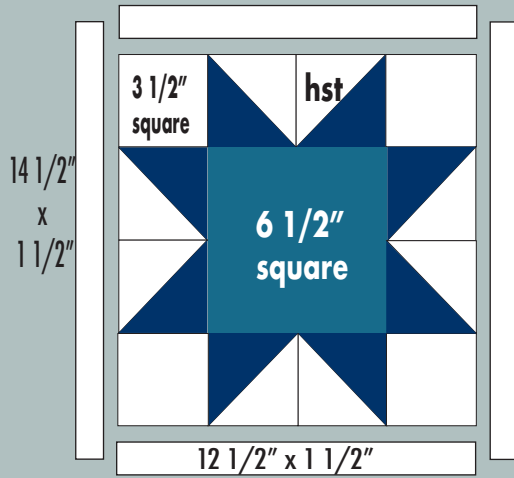


Make 24x

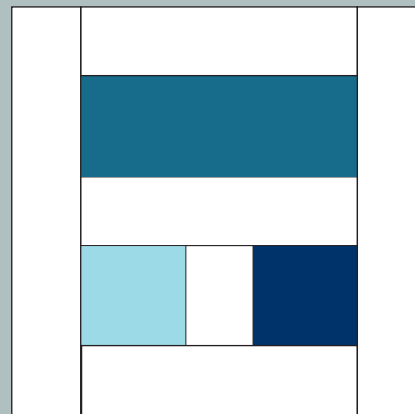
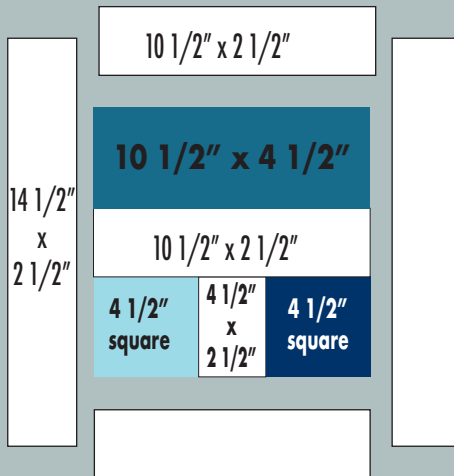


Make 8x

Step 2. Referring to the diagram below, make total of 6 blocks of block 1, and 6 blocks of block 2



Block 1

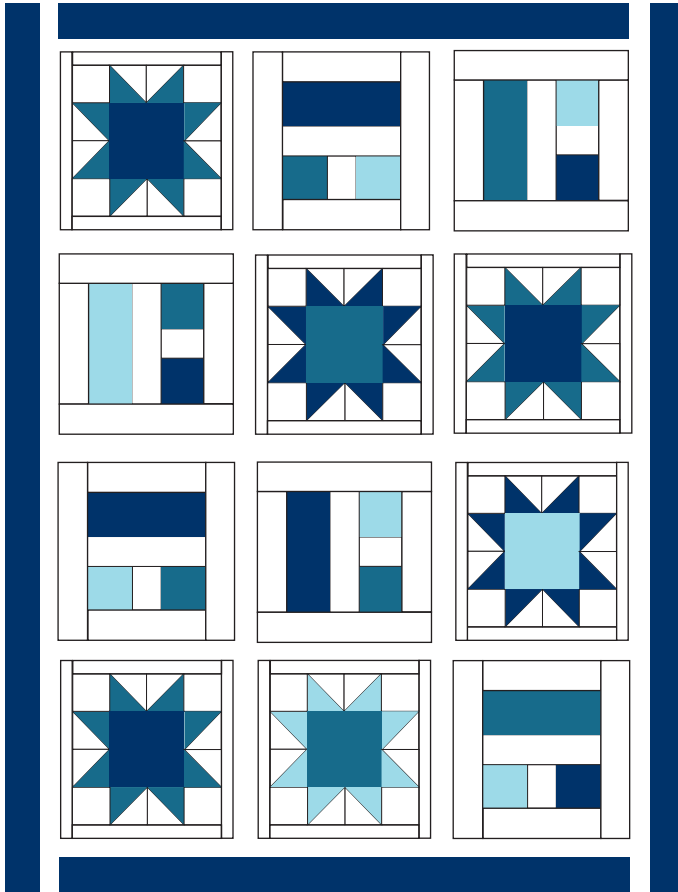


Block 2

watch the video tutorial : <https://youtu.be/pMgBdWwPIWo>

Shorter border

Longer border



I spy stars and cars quilt layout

- Step 3. Following the diagram above, layout and sew your quilt blocks together.
- Step 4. Sew the shorter border together, then sew the longer border together.
- Step 5. Layer with batting and backing fabric.
- Step 6. Quilt and bind as desired.

watch the video tutorial : <https://youtu.be/pMgBdWwPIWo>